

Under the High Patronage of
Mr Emmanuel MACRON
President of the French Republic

2024
**iNTER
MAT.**

PARIS
24 - 27 AVRIL 2024

Salon des solutions
& technologies durables
pour la construction

The nominees of
the international

INTERMAT Innovation Awards 2024

INNOVATION
AWARDS
by



under the chairmanship of the FNTF



CO-LOCATED WITH:



ORGANIZED BY

COMEX POSIUM

EVOLIS
LES ACTEURS DE L'INDUSTRIE
EN MOUVEMENT

SEIMAT

30 nominees in the running to become winners of the 9th edition of the competition

The nominees for the 9th INTERMAT Innovation Awards 2024 were announced on January 18 at the INTERMAT Press Days. 30 of the event's exhibitors and co-exhibitors are now in the running to become winners.

Chaired by Alain Grizaud, the chairman of FNTF, the international INTERMAT Innovation Awards competition pays tribute to equipment, technology, services, solutions or products that contribute to driving progress in the construction, infrastructure and materials industries, and to achieving the major transitions in the sector.

Among the new developments in this ninth edition, entrants could compete in new categories New Technologies & Energy and Low carbon & energy transition while four special awards recognising initiatives by companies offering a specific innovation will also be presented: World of Concrete Award, Low carbon Initiative and solution Award, Strat-up Award and Safety Award.

The jury* will meet for the final time in March to select the winners in each of the 5 categories and 4 Special Prizes. The winners will be announced at the Awards ceremony on April 24, the first day of the show.

The diversity and inventiveness of the products, equipment, technologies and services honored by the jury illustrate the tremendous capacity for innovation of equipment manufacturers, and the excellence of their practices in collectively providing innovative, sustainable solutions tailored to the needs of construction professionals.



Innovation trends for low-carbon efficiency

Energy transition is the watchword today. The construction industry is no exception to the obligation to share this goal so as to limit global warming, in proportion with its contribution to CO₂ emissions (37% worldwide).

The entire sector is concerned by the need to decarbonise. A worksite is made up of materials and the means to use them: people and equipment.

Construction equipment, which uses a lot of diesel fuel, is evolving to reduce its impact on the environment. Innovation is what makes this possible.

The INTERMAT 2024 Innovation Awards reflect what manufacturers and start-ups are proposing to reduce their emissions. They also propose products and projects to improve the design, operation and efficiency of construction sector production facilities, thereby limiting CO₂ emissions.

Site and machine organization and efficiency

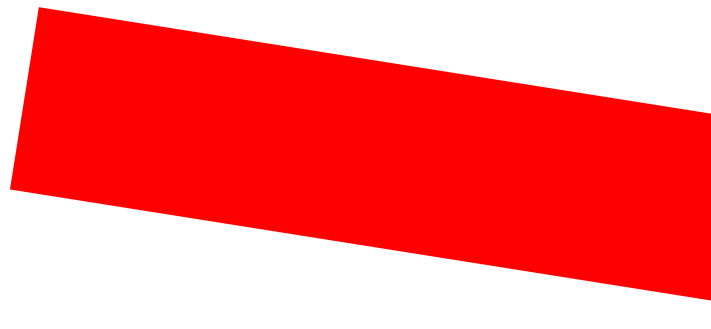
The first step is to increase the efficiency of the worksite and the machinery to optimise its use, reduce consumption per unit produced and, ultimately, improve the quality of the structure.

3D guidance (**Komatsu Europe, Heracles Robotics**) automatically improves the work of equipment.

The digitalisation of machines now means that their operating parameters can be monitored in real time, and, with the help of artificial intelligence and augmented reality, predictive maintenance can be carried out to limit unscheduled downtime (**Bergerat Monnoyeur**). At the same time, it enhances manufacturers' knowledge of the behaviour of their products. This approach requires sophisticated diagnostic tools (**Cojali France**). Monitoring can be used on components subject to high workloads, such as the bodies of dumper trucks (**Duratray International**). Machine maintenance ensures machine availability, with on-site services including, for example, a field-based hydraulic oil analysis service (**Chrono Flex**).

Improving worksite efficiency means better control of the risks, for example when tunnelling with a tunnel boring machine (**TBM**). Muography makes this non-destructive control possible (**Muodim**).

Improving site efficiency also means, in building and civil engineering applications, taking readings of distance, periphery and volume, with a device that works by inertia, thereby reducing errors when ordering materials, for example (**Moasure**).



New technologies and energy at the heart of materials

For machinery, the energy transition entails a change of energy source. Electricity, which already powers quarry material processing plants and tower cranes, is now being used in mobile equipment.

Currently limited to small and medium-sized earthmoving machinery, it is used in self-drive aerial platforms and transport vehicles, and is now making its way into portable concrete mixers (**Putzmeister**) and truck mounted AWP's (**Multitel Pagliero**).

Manufacturers offer «electrical kits» for the construction of equipment, or retrofitting for diesel machines (**Moog Construction, Novum Tech**).

In this context, it may make sense to replace conventional hydraulic cylinders with electric cylinders, which are reliable and require no regular maintenance (**Excess Engineering**).

Manufacturers are also exploring the hydrogen sector, to power either internal combustion engines or fuel cells. A growing number are developing prototypes for models that will be on the market in a few years' time.



Materials and energy savings

Material selection, processing and use play an important part in the potential reduction in CO₂ emissions from construction.

Analysing the impact of building products on the environment, an essential element of choice for projects, requires a declaration that can be facilitated by suitable software (**One Click**).

Green developments include the use of low-emission concrete, for example in pre-cast construction (**Betolar**), with the use of innovative fibres (**AraNea**), or poured on site with formwork methods suited to their early strength (**Sateco**).

In addition, roads are seeing the recycling of asphalt (**Ermont, Fayat**), and material sorting in view of its reuse, with specialist equipment (**Dynaset, DMS Technologie**).

Recycling the materials that make up ground-engaging tools contributes to the resource savings expected of today's construction sites (**Wirtgen**).

Safety, training and human resources

Construction site worker safety is a constant concern for companies. The first risk to be minimised is that associated with the movement of machinery. Manufacturers offer advanced solutions (**Bomag**).

They have also designed equipment to improve the versatility of their equipment and the precision of their work, thereby reducing the need for several machines and even manual labour (**Steelwrist**), while enhancing the safety of some of these devices, such as quick hitches. Equipment quick hitches have become a common sight on construction sites, mainly on excavators.

They can be dangerous to use unless they are designed to lock securely (**Cangini Benne**). Another example of innovation is the adaptation of equipment to different environments, such as kits for skid steer loader tracks (**Minitop**).

Finally, it is important to limit the emissions of products used on site when they are incorporated into concrete or in road applications, by using them in appropriate amounts (**Supply Company**).

Managing human resources also means training staff. Virtual training has also made inroads in the field of machinery driving simulators, which can be used to train operators effectively, in complete safety, without consuming diesel fuel, using a system that may be multi-user (**Tenstar**).

Concern for the human aspect of construction does not mean neglecting relations with people living near construction sites, or even with residents in the case of refurbishment. Streamlining relations between contractors and occupants can also help increase contractor productivity (**Avis Locataire**).



The 7 nominees in the category Earthmoving, Demolition and Transport



CANGINI BENNE SRL Evo System applied to quick couplers



The main added value of the Evo system relates to safety and operating efficiency, responding to the latest safety prerequisites introduced by the EN474 standard. With this innovative system, the operator can check whether the quick coupler has engaged correctly without leaving their seat in the cab. This is achieved by means of a dual indicator system which **informs the operator whether the quick coupler is fully connected to the adapter.**

By means of the two visual devices, located at the side and front for the highest safety, the operator can distinguish at a glance between complete and partial engagement between the quick coupler and the adapter.

The Evo System comprises three fundamental components to ensure outstanding worksite safety:

- Triangular yellow “Safe Check” side indicator
- Frontal visual marker, visible to the operator in the cab
- Fork double profile, shaped so that the tool cannot be released until it has been placed on the ground in a stable position

DURATRAY INTERNATIONAL Smart Tray



Duratray's Smart Tray (ST) is the most advanced dump tray for mining and construction trucks. The ST can monitor its condition (structural and wear) automatically and report to the user online and in real time.

DMS TECHNOLOGIE GMBH

Sorting Grab including carrier tool Softgrip



The DMS sorting grab SG is the first grab on the market with a fully enclosed plunger cylinder for digging and grabbing with excavators and loading cranes. The distinctiveness lies in the development of the patented, double-acting hydraulic cylinder. The reduced tare weight made possible by the unique, compact design allows any hydraulic excavator to carry more payload.

The sophisticated system with fully encapsulated piston and internal oil routing without hydraulic hoses in the working area reduces downtime and repair costs due to hose breakage and prevents any damage to the piston rod. The Softgrip are an accessory to the grab extending the use even further. Precast concrete elements and sensitive materials can be loaded and placed without any further tools than the grab on the excavator.

DYNASET OY

HRVB Hydraulic Recycling Vacuum Bucket



HRVB Hydraulic Recycling Vacuum Bucket transforms the hydraulic power of the base machine into powerful vacuum suction and air blower. HRVB is a compact and integrated all-in-one attachment unit for gathering, recycling, and sorting material, scrap, and similar matter found at construction sites, parks, roads, and railways.

The HRVB unit also works as a powerful air blower to clean and collect lighter matters like leaves. The HRVB is designed as an attachment for the excavators and material handling machines. As a stock order, the HRVB unit also comes with a 7,5m long suction hose for the auxiliary suction port for vacuuming material by hand.

MINITOP Tracksformer



Tracksformer is an Italian project, born from the creativity of Giovanni Pietro Giacomino. It's Minitop brand, synonym of experience, passion and innovation for over 25 years and leader in the European market of rubber tracks and tyres.

Tracksformer is the innovative and patented system which increases the performance of your skid steer loader everywhere and at all times.

Tracks can change according to your working needs thanks to the four tools typologies, each one is oriented to a specific setting to be applied on the 'naked' Tracksformer tracks: Snow, Work Site, Asphalt and Underwood.

The system provides the possibility of interchanging tools on the smooth belt. Assembly and disassembly are simple processes that can be carried out independently, so the skid steer loader becomes highly versatile and high-performance, adapting to the specific environment. Find out more at www.tracksformer.co

STEELWRIST Open-S Standard



The work to create the Open-S Standard was started in 2019, and has been spearheaded by Steelwrist and Rototilt, two companies that normally are fierce competitors but still decided to work together for the greater purpose of a common open, manufacturer-independent.

Global standard for fully automatic quick couplers.

An immense amount of work has been put into the project and all initial funding has been carried by the two founding companies, Steelwrist and Rototilt. Several manufacturers are now in the pipeline for admission.

STEELWRIST TCX Tilt coupler



The TCX – a tilt function for the smallest excavators.

Available as Direct mounted with S30/180 coupler. New technology on a simple product : Front Pin Safety Hook, Fully casted compact body, Expander pins

The **5** nominees in the category **Roads, Materials and Foundations Industries**

BOMAG Bomag emergency brake assist



BOMAG Emergency Brake Assist is a technology designed for road construction machines that prevents collisions while protecting the hot asphalt surface from damage. The machine continuously scans its surroundings for perfect coverage. System is able to detect potential hazards before they occur. This allows for the early application of automatic deceleration strategies.

Key features:

- Scanning of surroundings using multi-level lidar technology
- Projection of the machine's travel path based on speed and steering angle
- Reliable detection of people and objects in the machine's travel path
- Fully integrated solution enables the machine to «see around corners»
- Collision prevention through automatic braking
- Multiple braking strategies that adapt to the operator's driving behaviour
- Early anticipation and braking strategies protect the hot asphalt surface from damage

DMS TECHNOLOGIE GMBH Excavator Blade Control (EBC)



The excavator blade control (EBC) is an automated control system for the excavator blade. Grading jobs can be done with the blade instead of the bucket, when the EBC is installed giving the possibility to do levelling jobs supported by an automated control system.

The system consists of a laser receiver, the control system which is installed to the excavator and the side plates and mast attached to the blade.

The system is highly productive, easy to use and affordable! The result is a doubled productivity and a better end result of the levelling job.



ERMONT TSX: the ecological asphalt plant



The TSX is a new continuous asphalt plant, ecological, unique in the world, capable of recycling from 0 to 70% of recycled asphalt pavement (RAP) coming from road maintenance with just one drum, while ensuring environment respect and high-quality HMA.

The TSX uses two technologies developed by ERMONT:

- DUOTHERM which allows for RAP drying and heating without damage, in order to guarantee the high quality of the recycled HMA.
- ECOFIRE which allows for energy recovery from gases and reintroducing it into the burner in order to optimize combustion and reduce energy consumption.

TSX asphalt plants are available in stationary (TSX INCITY) and supermobile (TSX HIGHWAY) versions.

SUPPLY COMPANY Pigment in tablet form



Pigment in solid form without dust, easy to dose with automatic systems (unlike its initial form: powder), no longer fears moisture (more product loss) respectful of human health (more nano particle with titanium dioxide: carcinogenic) according to (Titanium dioxide (FT 291). Regulation - Toxicological data sheet - INRS

Environmentally friendly, because it disperses just by friction and more by heat and friction (for the road sector) thus reducing the cost ..gas or electricity and a sharp decrease in CO2 emissions into the atmosphere.

This form can be used in all sectors of activity: Concrete industry, Road industry, paint industry or the form of pigment used and in the form of paste: «mixture of water and pigment» and transport with a too high carbon footprint. Storage is easier than powder pigment with less constraints as the humidity.

WIRTGEN France The recycling of road milling cutting tools



The chemical process developed by BETEK, system partner of the WIRTGEN Group, enables through zinc based treatment to recover the entire tungsten carbide and cobalt remaining on the used cutting tools and reintroduce into the manufacture of new road milling tools.

The **6** nominees in the category **Building, Civil Engineering and Concrete Sector**

AraNea Composite based on Glass Fibers



AraNea Composite (Michelin Group) offers the construction market a glass-resin composite fiber that can replace all or part of the reinforcement used in precast concrete elements. Our fiber provides interesting mechanical and chemical characteristics for the dimensioning of concrete structures: mass/weight ratio, anti-corrosion, reduced reinforcement coating, adaptation to low-carbon concrete.

These arguments make it possible to achieve significant CO2 savings not only during construction, but also throughout the life of the structure. AraNea Composite is positioned as a highly technical, low-carbon reinforcement.

BETOLAR Geoprime Hollow-Core Slab



Betolar offers a sustainable, low-carbon concrete material with its Geoprime® solution. The proposed solution makes it possible to transform large volumes of previously unused industrial by-products into an alternative cement to replace portland cement, which is responsible for 8% of global CO2 emissions. Geoprime is a cement-free material designed for various concrete and construction product applications.

It is completely equivalent to traditional cement-based concrete but has up to 80 % lower carbon footprint.

With our Geoprime Hollow Core Slab solution, today's most environmentally-friendly hollow-core slabs, we are helping manufacturers of precast concrete elements to meet the demand for building products with a low carbon footprint. Our solutions are easy to implement in current production, without the need for major production modifications.

PUTZMEISTER e-Mixer iONTRON



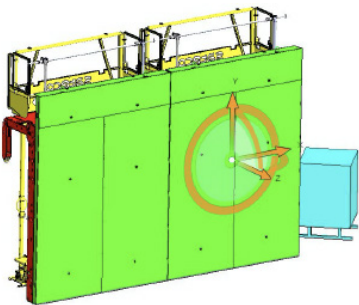
100% electric truck-mounted concrete mixer for 100% electric driving and mixing.

Moving Electric truck 8x4 SANY 408P
Mixing Electric body P 9 G iONTRON

100% ecologic

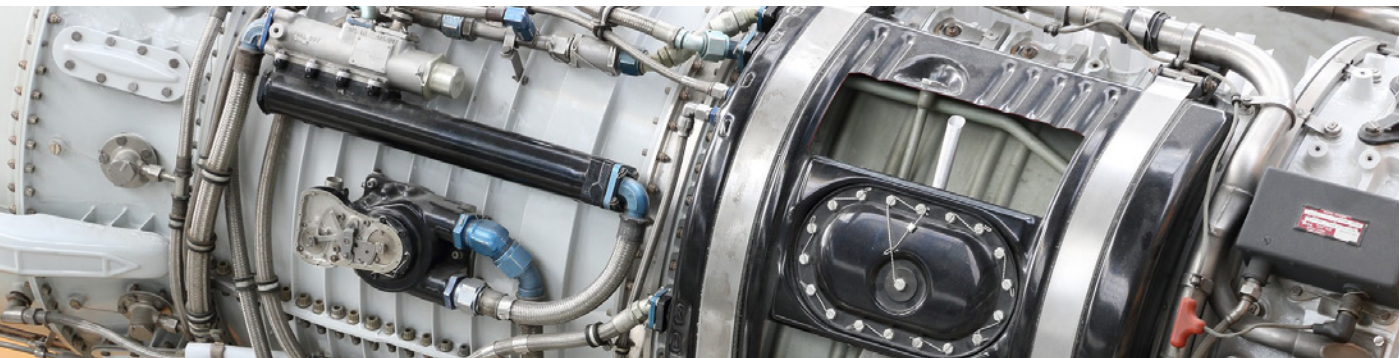
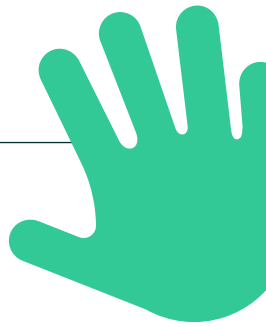
- CO2 emissions down to zero, depending on the local energy mix
- Significantly reduced noise emissions
- Fuel consumption: zero liters of diesel
- eChassis consumption on the move (unladen): 120 kWh/100 km

SATECO ThermoKit



The «ThermoKit» is designed to maintain productivity on sites using low or very low carbon concrete. An insulating and heating tool that withstands the mechanical stresses of concrete. It is a metal formwork box that is added to the standard panels. It insulates, maintains and completes the heat generated by the concrete's exotherm during **drying**.

A heating solution, thanks to heating fabrics positioned inside the caisson. Only the concrete is heated, not the load-bearing panel, which prevents heat loss. The heating system takes account of external conditions and the type of concrete used to regulate its temperature. Similarly, the system is regulated according to the zones to be heated, to ensure uniform drying. The stiffeners in the caisson absorb and transmit the forces in the load-bearing panel. The caisson is electrically heated in series, and is supplied by the site's floor electrical boxes.



SELFBETON

Concrete filling station SELFBETON



The SELFBETON automatic concrete distributor is a global concept designed to give access to the purchase of fresh, ready-to-use concrete and mortar to all professionals and private individuals who need small quantities of concrete (from 3 wheelbarrows).

SELFBETON is an automated production system that allows users to buy concrete online or directly from a kiosk. The machine then produces the customer's order in complete autonomy and delivers the ready-mix concrete directly to the customer's trailer or adapted vehicle in less than 3 minutes. The originality of the concept lies in its automatic cleaning system, which generates no waste and no effluent. Selfbeton is less polluting than a simple concrete mixer.

SELFBETON | E-SELFTOUIPIE

The electric concrete mixing traile



E-SELFTOUIPIE is a trailer-mounted electric mini-mixer that can be towed by a light vehicle to transport small quantities of concrete up to 1000 liters. Suitable for delivering to small sites or sites with difficult access, its electric motor gives it an operating time of almost 8 hours.

The E-SELFTOUIPIE is the perfect complement to conventional truck-mounted concrete mixers, starting where truck-mounted concrete mixers stop: delivering concrete or mortar in volumes of less than 1m³. Designed to provide a service for professionals and private individuals wishing to transport their concrete from a production unit to their worksite, E-SELFTOUIPIE eliminates the environmental risks, accident hazards and noise pollution associated with making concrete directly on site.

The **5** nominees in the category **Low carbon & energy transition**

MARINI Marini EvoDRYER



The Marini team of expert engineers and technicians conceived a new solution that would merge all the customer requirements into one: **Marini EvoDryer represents, to date, the best available technology when it comes to introducing the RAP into the recycling ring and allow customer that flexibility of action that would significantly help meeting the most different market needs.**

The limit of existing recycling ring for all the producers is the fact that the RAP is inserted in a very hot area and, no matter the special “protecting flights”, it is really strained; for this reason the quality of the final asphalt can be at risk, higher emissions and bad smell all over the jobsite could take place.

The concept behind Marini EvoDryer is the increase of the length of the dryer drum, the change of the position of the introduction of the RAP after the dryer flame and the modification of the internal paddles.

MULTILITEL PAGLIERO New full electric range, Axon: truck-mounted platforms MT 162 Axon and MJE 250 Axon



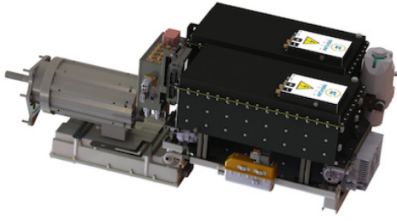
Mounted on an Iveco eDaily 35S10 Full Electric truck of 3.5 t GVW, a telescopic platform providing a working height of 16.2m and a load capacity of 80kg at its maximum horizontal outreach of 11.2m, rising to 250kg at 7.4m outreach. At a length of 7,123mm and height of 2,740mm when closed, it has straight line stabilizers with front and rear vertical descent, making it a vehicle easy to position even in tight spots.

Telescopic aerial platform MJE 250 Axon on e-Daily 50C14 E of 5,2 ton GVW with twin wheels. Maximum working height of 24.7m. At its maximum horizontal outreach of 16.5 metres, the platform's capacity is 100kg, rising to 250kg at 12.5m outreach. With the boom fully extended it is possible to work below ground reach at -3.5m.

On both models, EVE ensures speed, linearity, and fluidity of vertical and horizontal movements. No sudden lurches but extending of the sections and elevation of the boom always in perfect balance and with instant adjustments.

NOVUM TECH

Electrification system



We develop and manufacture on-site in Isère a **complete range of electrification systems from 48V to 800V, with a power range of 5kW to 350 kW, tailored to the current challenges of the market.**

These solutions address a wide range of applications, from small vehicles to large industrial vehicles (mini-excavators, road vehicles, trucks, agricultural machinery, etc.). These solutions consist of several technological components assembled together to deliver a finished, Plug'n'Play product in series, and at lower costs for our customers.

MOOG CONSTRUCTION

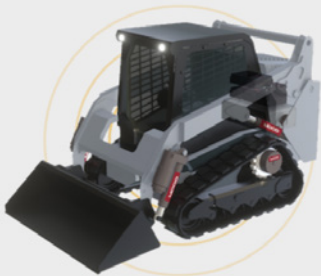
ZQuip



A plug and play modular platform that replaces diesel engines. Designed to connect and run the ZQuip battery modules to power the maintenance-free electric motors that drive the existing hydraulic systems.

MOOG CONSTRUCTION

TerraTech



TerraTech is a proven, integrated, electric ecosystem combining control software, durable hardware (electric cylinders, vehicle control modules, motors, controllers, energy management), and digital insights through IoT.



The 7 nominees in the category New Technologies & Energy

BERGERAT MONNOYEUR

Digitalization, artificial intelligence and augmented reality for fleet management



SERVICES RESULTING FROM CONNECTIVITY:

Ensure 100% connected fleet with quality data (including retrofit, including replacement of outdated 2G/3G equipment, all brands), transmitted on our platform or any other platform chosen by the client (ERP, GMAO,...); standard monthly report with benchmark and CO2 emissions.

Remote diagnostic access: with augmented reality and telemetry, we offer direct access to our remote diagnostic service.

Predictive maintenance: using AI, daily machine health data, historic work data on the machine and equivalent components in the territory, manufacturer data, combined with the expertise of our teams, personalized advice, function of the subscription levels is issued, directly to the client or through our network of after-salesmen (PSSR).

And always proactive planning of preventive maintenance of the fleet.

CHRONO FLEX

On-site hydraulic oil filtration service



Since its creation, the main CHRONO Flex mission is to reduce the machine downtime to its customers, replacing the hydraulic hoses on site. Thanks to our 300 technicians' daily proximity in the field, we noticed three major elements :

- 70% of hydraulic failures are linked to the oil pollution (source: In Situ).
- A difficulty to find machine maintenance resources in workshops including hydraulic oil drains.
- A context where customers have to implement a CSR approach and therefore, a change in habits and mentality must take place.

With this observation, as a hydraulic solutions partner, CHRONO Flex supports its customers in their machines extending lifespan offering a new hydraulic oil filtration service.

COJALI France Jaltest Diagnostic AR



Jaltest Diagnostics AR is the first multi-brand diagnostics system developed with technology of mixed reality that allows the technician to diagnose the electronic units of a vehicle and interact with them, consult technical information related and receive advanced technical support. All of this in real time and with a hands-free concept that is totally innovative and pioneer in the market.

EXCESS ENGINEERING AS Electric Actuator-A Hydraulic-Free Option



We have developed **an electric actuator that replaces heavy-duty hydraulic systems, providing an all-electric system to push, pull, and lift with an energy efficiency of 87%. This solution combines high power (80+ tons) and a long stroke (up to 3 m).**

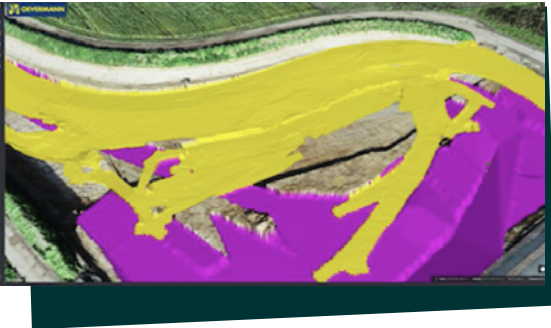
The electric system offers numerous advantages, including improved energy efficiency, the absence of hydraulic oil requirements, and an extended service life. It can be designed in a compact form factor comparable in size to existing hydraulic systems, eliminating the need for significant modifications to the construction machinery's structure when replacing hydraulic systems with electric actuators.

This innovation has earned the Seal of Excellence from the European Innovation Commission, and been awarded 10 million EUR in funding to bring this technology to the market through the European Innovation Council Accelerator program in June 2023.



KOMATSU EUROPE INTERNATIONAL NV

Toolset to commodify as-built terrain data collection in an earthmoving environment



Komatsu Smart Construction Europe is concluding the development of an inexpensive, user-friendly toolset for the collection of as-built terrain data. This product suite is not exclusive to the Komatsu ecosystem as it takes an original equipment manufacturer (OEM) neutral position and allows connectivity to happen from competing brands.

This advanced suite encompasses the Smart Construction (SC) 3D Machine Guidance, and Intermat exclusive 3D Machine Guidance Flex acting as IoT devices, the Smart Construction Remote for facilitating data transmission, and Smart Construction Dashboard for comprehensive 3D visualisation and analysis.

By commodifying the collection and visualization of as-built data Komatsu enables the industry as a whole by shortening the progress and feedback cycle, that historical could take a week to a month, to under a day by using for the most part contractors owned equipment. Making digital transformation possible for all contractors even the one-man-shows.

MOASURE

Moasure ONE



Introducing Moasure, the world's first motion-based measuring tool revolutionizing construction and civil engineering.

Moasure's patented technology transforms how professionals work, enabling rapid and simultaneous measurement and drawing. By simplifying the measurement of challenging shapes and spaces, Moasure empowers construction experts to adopt a new approach with real-time data viewable on their devices.

This innovative tool allows users to draw, capture in 3D, factor in gradients, elevations, and calculate areas effortlessly, even around obstacles. Moasure provides accurate surface area and volume calculations, aiding in material ordering and site leveling.

TENSTAR SOLUTION AB

Tenstar Virtual Training Space



Our invention is the only one in the world that lets several users exercise and learn together in a range of different fields, such as construction, agriculture, or the transport sector. **It's a system of several training simulators connected in a sandbox environment.**



A judging panel made up of French and international users and experts

Chaired by Alain Grizaud, the chairman of FNTP, the jury for the INTERMAT Innovation Awards, mainly made up of users, experts from construction sector companies or bodies, comprises nine French members and eight international members involved in the themes of zero carbon and energy but also in the areas of cost savings, safety or training, which are all central topics at the 2024 edition of the show.

INTERNATIONAL JUDGES

- **Domenico Campogrande**, General Director, European Construction Industry Federation (FIEC)
- **Michel Petitjean**, General Secretary, European Rental Association (ERA)
- **Maria Moreno**, International Director, Asociacion de Empresas Constructoras y Concesionarias de Infraestructuras SEOPAN
- **Alessio Rimoldi**, Secretary General, Federation of the European Precast Concrete Industry (BIBM)
- **Brian Jones**, Construction Plant-Hire Association
- **Massimiliano Ruggeri**, Technical Director, Imamoter
- **Michele Levati**, Director, Lombardini 22 Civil Engineering
- **Heinz G. Rittman**, CEO, Deutscher Auslandsbau Verband

THE FRENCH JURY

- **Dominique Chevillard**, Technical and Research Director, FNTP
- **Christophe Possémé**, President, UMGO-FFB
- **Fabrice Blanc**, Equipment Director, Eiffage Génie Civil
- **Maxime Chamillard**, Labs coordinator & Innovation strategy consultant, Impulse Partner
- **Vincent Simon**, Director of ambassador engagement, Worldskills
- **Matthieu Armengaud**, Head of Maintenance, Safety, Environment, DLR
- **Frédéric Peigne**, Project Director of Grand Paris Express lines 16 and 17, Société du Grand Paris
- **François Renault**, Equipment and Environment Director, Kiloutou
- **Anthony Goubert**, influencer, Radio TP



About the organisers

S.E. INTERMAT brings together:

EVOLIS

EVOLIS, a grouping of CISMA (construction, infrastructure, steel and handling equipment association) and PROFLUID (French pumps and agitators, compressors and valves association), is the trade organisation representing the players in the French mechanical equipment market. Since its merger with SYMOP (organisation of machines and equipment for industrial production), EVOLIS now represents 600 member companies, 82,000 jobs in France and a turnover of 18 billion euros, of which 11 billion euros is exported.

www.evolis.org

SEIMAT

SEIMAT, the Association of International Civil Engineering, Mining, Construction and Hoisting Equipment Industries. SEIMAT federates and drives the leading global players in construction machinery and equipment operating in France. The trade association brings its members key expertise on legal, technical, social, environmental, customs, and health & safety issues. It also offers constantly updated information on economic and industrial activity, and produces equipment sales statistics for France. Through its society Club SEIMAT, it actively contributes to promoting and enhancing the brand image of jobs in construction and handling maintenance.

www.seimat.com

COMEXPOSIUM

one of the leading event organisers worldwide, creating events that bring communities together to discover and explore businesses, passions and interests. Comexposium organises more than 150 professional and general public events, covering more than 10 sectors of activity (agriculture/food, retail/digital, fashion/accessories, leisure...). The group connects 48,000 exhibitors and 3.5 million visitors, 365 days a year in 22 countries. Creating experiences and encounters between individuals, Comexposium enables throughout its events (SIAL, All4Pack, Paris Retail Week, One to One Monaco & Biarritz, Foire de Paris, Rétromobile, etc.) and its associated content its communities to be connected all year round through an effective and targeted omni-channel approach.

INTERMAT contacts

COMEXPOSIUM

Laura SANCHEZ,

Marketing and Communications Director

+ 33 (0)7 60 34 67 28

laura.sanchez@comexposium.com

Lisa MARCHAL,

International Marketing Officer

+ 33 (0)6 50 58 21 75

lisa.marchal@comexposium.com

Media enquiries

LA VILLA Maison de Communication

Margaux CORREIA

+ 33 (0)6 75 37 82 43

mcorreia@lavillagroupe.com

Esther Lemblé

+33 (0)6 23 49 63 61

elemble@lavillagroupe.com

Patricia DESMERGER

+33 (0)6 07 47 34 77

patricia.desmerger@orange.fr

PARIS.INTERMATCONSTRUCTION.COM

Follow us



#INTERMATPARIS

CO-LOCATED WITH:



